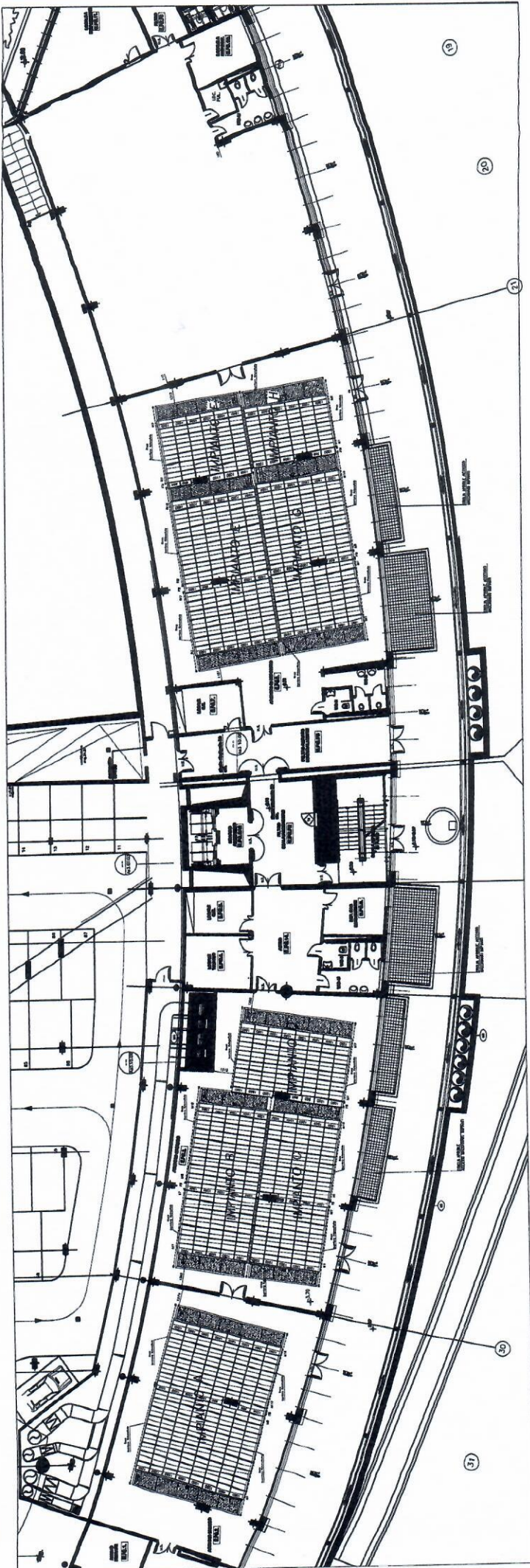
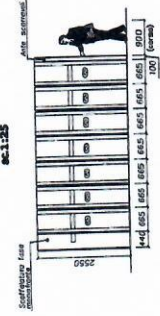


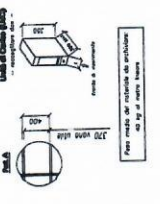
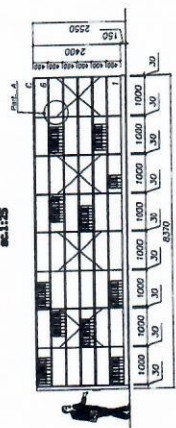
1 Pianta Piano Seminterrato
Corpo Est



VISTA FRONTALE TIPO
sc.1:25



VISTA LATERALE TIPO
sc.1:25



- CAPACITA':**
- IMPIANTO A= 1817,6 m
 - IMPIANTO B= 1020 m
 - IMPIANTO C= 1003,2 m
 - IMPIANTO D= 712,8 m
 - IMPIANTO E= 1210,8 m
 - IMPIANTO F= 532,2 m
 - IMPIANTO G= 1210,8 m
 - IMPIANTO H= 460,2 m

Capacità totale di archiviazione: 7.767,6